



New

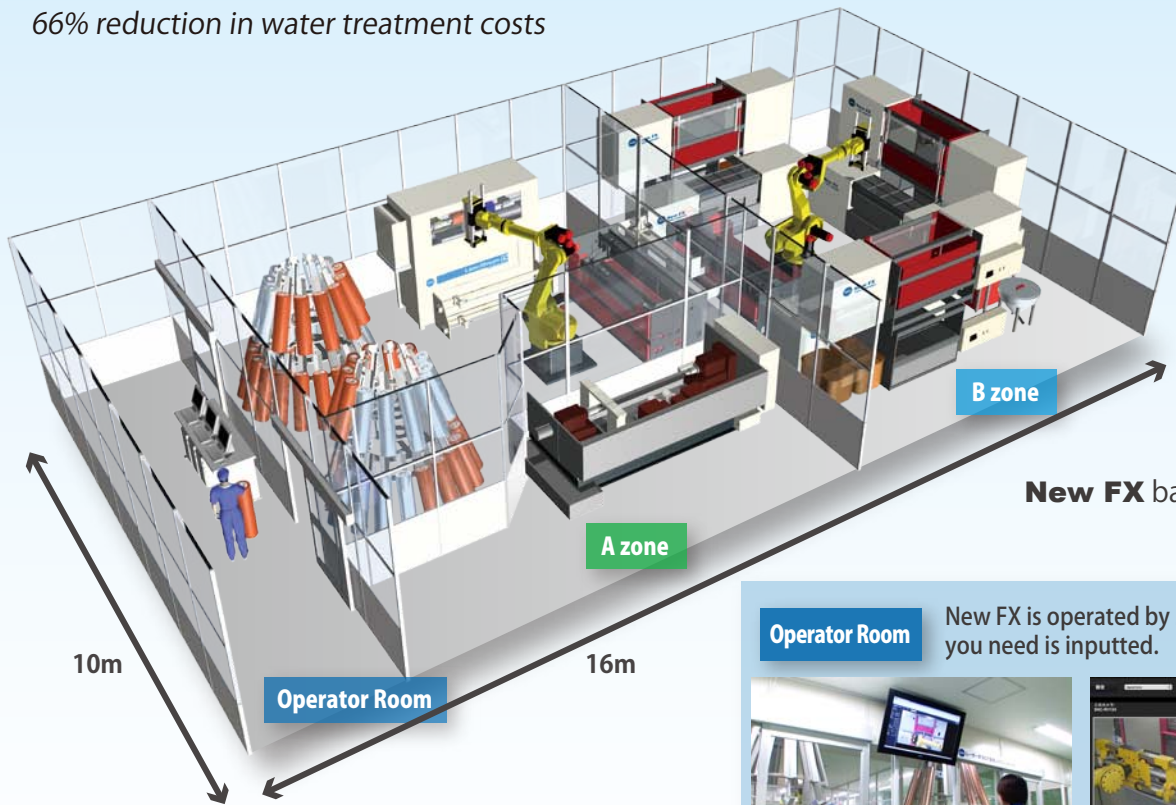
Eco Gravure Cylinder Production System

New FX



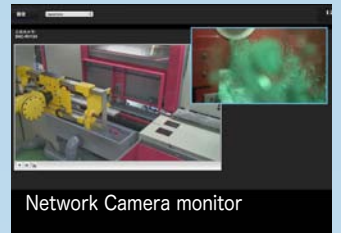
50% reduction in area compared to FX-80
 50% reduction in power consumption
 66% reduction in water treatment costs

FX-eco cylinder decreases ink, app.30%
 DoubleTone & DotCode Technology



Operator Room

New FX is operated by MMI which all the data you need is inputted.



Network Camera monitor

A zone

A zone units (FX laser, Coating, Ultrasonic cleaning, Polishing)



B zone

At B zone, Cu, Cr, Developing, Etching, Cleaning are in operation.



FX-eco cylinder decreases app. **30%** ink consumption compared with Helio.
A big difference of VOC exhaust was proved by this test.

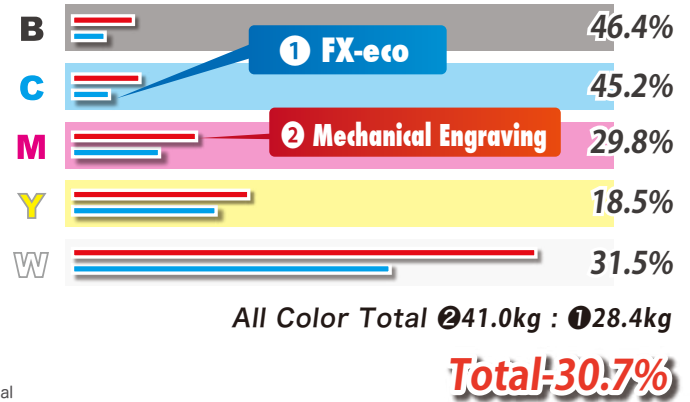
Ink consumption test with FX-eco cylinder and Helio cylinder

Comparison of ink reduction rates

① FX-eco **Depth 10~14μm**
Non-toluene high density Solvent ink

② Mechanical Engraving **Depth 40μm(max)**
Non-toluene Solvent ink

Print speed : 200m/min Print Run : 3000m Ink : Sakata Inx Film : Futamura Chemical



Double Tone

Making two different tone on one cylinder

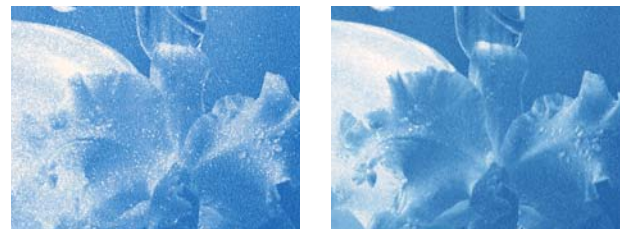
Using Think Double Tone Technology, you will now be able to print with fine gradation on front print, back print, printing on papers, or any other substrate. Just select one job file on system of New FX with Double Tone option, and the rest of the work is done automatically. No need to stop the line or take the cylinder out for etching two times.

Below is a picture of cell taken with depth meter. Combination with usual gravure dot (175lpi) and subdot with FM screen. Another sample is with usual gravure dot (200lpi) and subdot with gravure dot (100lpi). Subdot of each sample is printed with 2 to 4 micron depth, very shallow cylinder cell.



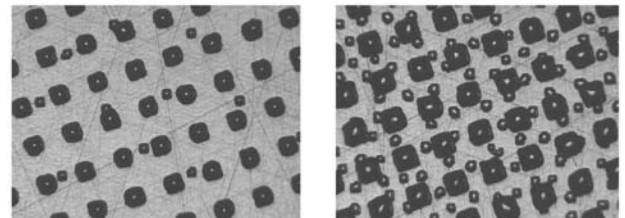
Image is automatically created ID-2

Print sample (cardboard)



Gravure DOT (150L)

Double Tone



Double Tone cylinder surface

Dot Code

Think Laser Cylinder enabled the dot code print on the film package

In the gravure printing, products with dot code will be soon launching in the market which can be only possible to produce with Think Laser System. Companies are starting to utilize dot code for products and security purpose from this spring. New speaking pen support recording a message and can be used as a USB pen. Soon bluetooth pen will be launched which will be supporting iPhone or iPad to work with.



Speaking Pen (USB Support)

Bluetooth Pen (iPhone Support)